

DL6 Mounting Kit

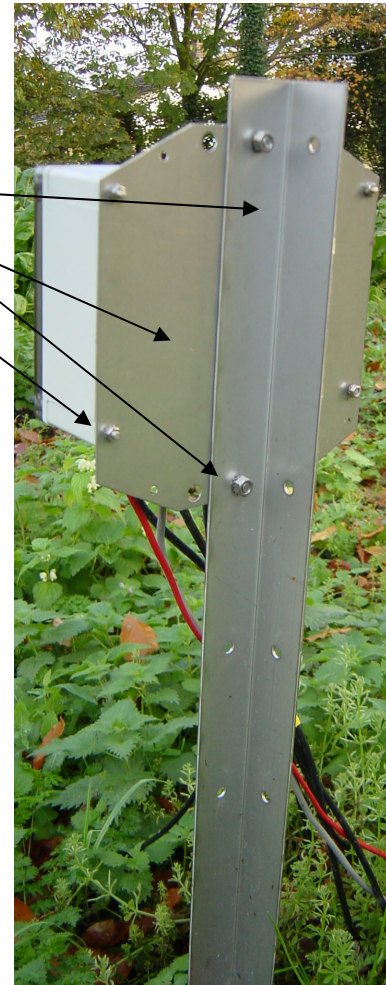
Comprises

- St. Steel Mounting Post 1m long
- St. Steel Mounting Plate M6 St. Steel Bolt, star washer and nut x 2
- M4 St. Steel Screw, star washer and nut x 4
- Cable Tie x 2

Warning – Please use this procedure when installing the DL6 Mounting Kit. Do not fit the logger to the post first and drive it into the ground, as this can lead to damage of the internal electronic components and invalidate any warranty.

Fitting Back Plates to DL6

1. Remove the lid from the logger and slide an M4 screw into a vacant mounting hole and through the bottom of the logger.
2. Whilst holding the screw in place with a screwdriver, bring the mounting plate hole over the exposed thread and secure finger tight with the star washer and nut.
3. Rotate the mounting plate so that the second fixing hole lines up. Slide the next M4 screw down the hole and through the mounting plate underneath. Fit the star washer and nut and tighten both screws fully.



Warning – Please ensure that adequate health and safety procedures are in place, in respect to Personal Protective Equipment and any risks to health prior installation.

Installing the Mounting Post

1. Ensure the correct orientation of the post before hand, so that the known flat face will be the side the logger faces when complete.
2. Holding the post steady, use a rubber mallet and drive the post into the ground to a depth of at least 0.5M, ensuring that it remains as vertical as possible.

Fitting the Logger

1. Slide one M6 bolt through the top mounting plate fitted to the logger and then pass it through the post. Whilst holding the bolt, secure finger tight with the star washer and nut.
2. Align the bottom hole and slide the second M6 bolt through the bottom plate and post, and fit the star washer and nut. Tighten both bolts fully to complete.

Cables

1. Use the cable ties to ensure a tidy installation, so cables cannot be easily snagged or trampled upon when inspecting the logger.
2. It is also useful to protect cables from wildlife that can chew through them. Complete burial, trunking or sheaths are the most effective.